



BEVERLY POLICE DEPARTMENT

FY 2020

The Beverly Police Department is pleased to present to you the crime statistics for the City of Beverly for Fiscal Year 2020.

FISCAL YEAR REPORT



TABLE OF CONTENTS

A Message from Chief John LeLacheur.....	3
Department Mission Statement & Goals.....	5
Organizational Charts.....	6
Patrol Division.....	8
Criminal Investigation Division.....	9
Services Division.....	10
Domestic Violence.....	11
Traffic & Safety.....	13
Crime Data.....	14



A MESSAGE FROM THE CHIEF

Beverly is a great place to live and work. The Beverly Police Department mission statement reads in part, “While maintaining respect for individual rights, human dignity, cultural diversity and community values, we pledge to sustain a working partnership with our community to protect life and property, and to maintain a safe and peaceful environment for all.” Our community’s safe and family friendly environment could not be achieved without the talent and commitment of the men and women of the Beverly Police Department and the partnerships we share with our citizens. Beverly was named one of the safest cities in the Commonwealth to live in.

The effectiveness of our citizen-police partnerships can be sensed when you walk through our neighborhoods in the evening or enjoy a night out in our downtown restaurants. The Beverly Police Community Advisory Committee has volunteered their time and effort to consistently implement the philosophy of “Broken Windows.” In partnership we have removed graffiti from our streets and neighborhoods, reduced the volume of speeding and dangerous drivers on our roads, and provided education to reduce drug abuse. Each of these initiatives has added to the high quality of life in our city. We are adding additional equipment to our cruisers to enforce the new citywide 25MPH speed limit.

FY 2020 recorded an increase in calls for police services. Violent crime in Beverly is down which is consistent with the national trend, Beverly experienced a reduction in most property related crimes as well. We have not been immune to the current opioid crisis gripping this part of the Country. Our officers have saved many lives through the use of NARCAN and other first aid methods. We continue to train our officers in these life saving techniques and will continue to explore new ways of preserving life. We were successful in receiving a twenty-thousand (\$20,000.00) grant to continue to train other City Departments in the use of NARCAN and will be able to re-supply our officers as needed. Both the amount of overdoses we responded to and deaths associated with illegal drugs has declined in the City.

We will maintain two School Resource Officer we will continue to have two (2) full-time SROs for the 2020-2021 school year.

The rapid dissemination of public safety information to our citizens was enhanced by synchronizing communication technology and social media applications. The city’s Swift Reach phone system, BPD Facebook, Twitter, MyPD Smartphone application, and the Beverly Police Web site www.beverlypd.org rapidly developed as an effective means to provide timely and concise community safety information. Every citizen is strongly encouraged to log in or sign up for these important services. We remind everyone that incidents and crimes should be reported immediately to the police station by calling either 911 in an emergency, we also now have the ability to receive text messages to 911 if and when you are unable to speak. This option can be of great assistance when reporting a crime in progress. For business or non-emergency calls, 978-922-1212 is number to call. Social media sites are not monitored twenty-four (24) hours a day.

The tragic death of George Floyd as us looking at our policies and training methods. I can assure you that the members of the Beverly Police Department follow all of the proper training methods taught by the Commonwealth and will continue to build strong bonds with our community through Community Policing. It’s important to build trust with all those we serve.

A newer Statewide 911 system has been added to our dispatch center. With the newer equipment we now receive all of our cellular calls directly at the Police Station. Cellular calls used to be routed through a central receiving station and then transferred to Beverly. The new system allows our officers to process the calls directly and immediately dispatch police, fire and or ambulance without delay.



Due to COVID-19 we were unable to recognize the students who participate in our yearly art contest for the Community Advisory Committee. We also hope to resume our monthly CAC meetings soon. The Community Impact Unit has had great success this year working within our neighborhoods and responding to issues that have been raised by members of the community. The Police Department was also awarded a \$90,000 grant from the Massachusetts Department of Mental Health to hire a Jail Diversion Worker. This person will assist those with mental health disorders and assist with overdose follow-up treatment.

The Beverly Police Department remains in self-assessment as we move toward Accreditation. Several officers have been trained as Mental Health Response Team members and several more will be trained this fiscal year. We have also pledged with the International Association of Chiefs of Police to train eighty percent (80%) of our officers in Mental Health First Aid. We also remain a member of the North East Massachusetts Law Enforcement Council (NEMLEC). Officers from Beverly have responded to several major incidents to assist in our mutual aid commitment.

A new radio consoles for police dispatch to replace equipment that was purchased in 1983 is being installed. Also with the assistance from the City and State we are moving toward purchasing a new computer aided dispatch system to replace a system first put into service in 1999.

The building of a new state of the art police station is well under way and we look forward into moving in the summer of 2021.

The men and women of the Beverly Police Department look forward to providing our community with unmatched excellence in law enforcement services.

Beverly has been very supportive of our community engagement efforts. Many citizens have come into the station, or sent cards thanking our officers. It is now up to the Police Department to continue to work with the community to maintain a professional and community based relationship. I now also sit on the City's Human Rights Committee. I believe by working with our committee we can resolve, or at least understand the problems some residents face. As I have said on many occasions, "We will not tolerate intolerance in Beverly."

In closing, the department would like to recognize our recently retired officers Sergeant Russ Rollins and Officer Dan Skerry for many years of service to the City of Beverly. They performed with the utmost professionalism for over many years. I thank them for their dedication and service to both the department and community.

COVID-19 has impacted this area hard. Officers on a daily basis deal with those who may have been impacted in one way, or another by this pandemic. We have been tasked with extra patrols to maintain the Health and Safety rules which have been established by the Commonwealth. We also still respond to serious medical situations, car accidents, domestic distances, sometimes not knowing if there may be a COVID-19 positive individual.

We also tragically lost a member of our department and ask you to remember him and his family for his service to the City.

I am honored to serve this great city and to be a member of such a professional and committed organization of men and women.

John G. LeLacheur
Chief of Police
beverlychief@bevelyma.gov
Twitter: @ChiefLeLacheur



MISSION STATEMENT

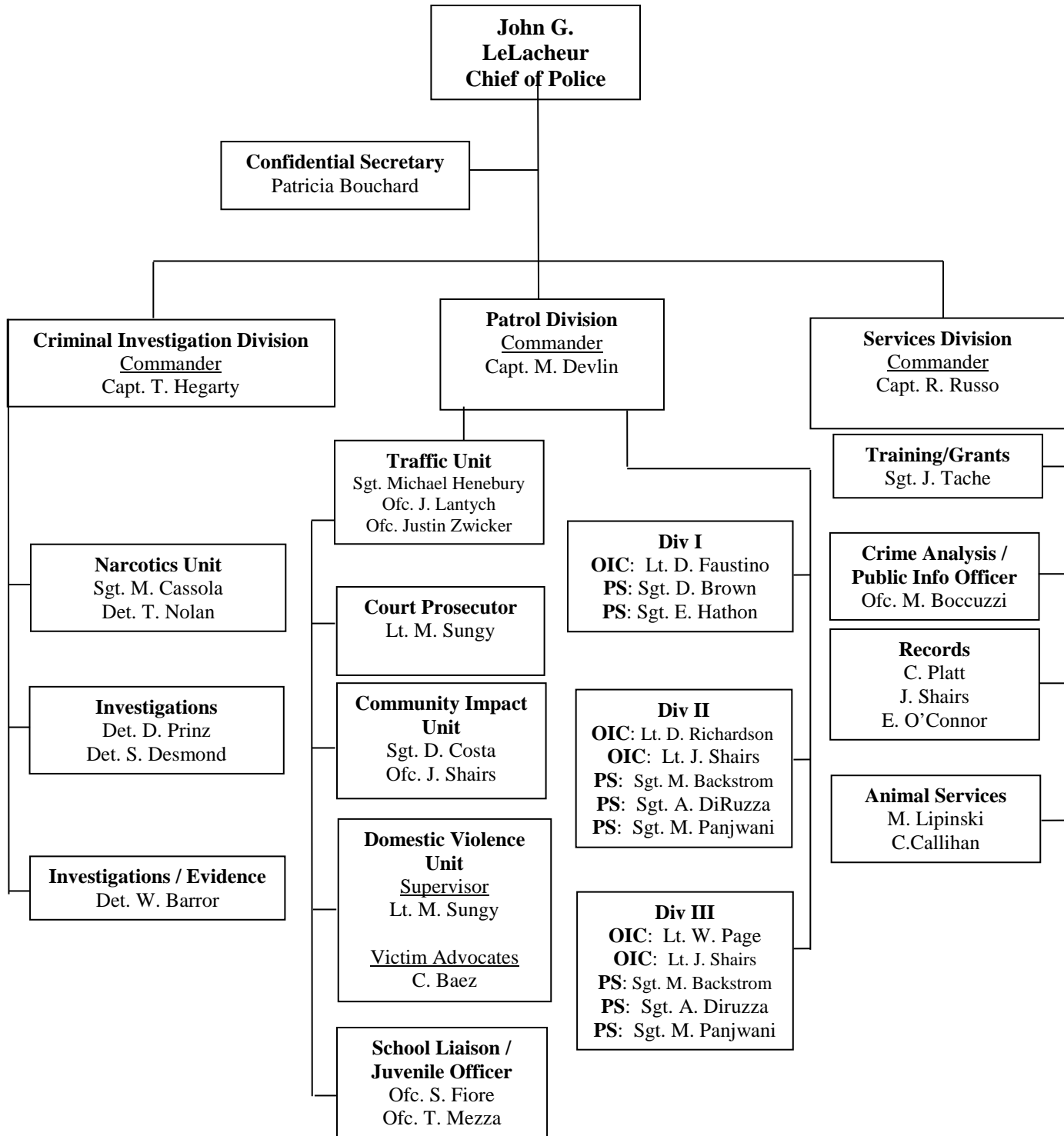
The Beverly Police Department is an organization comprised of professional men and women who are ethically and morally dedicated to providing the finest quality of law enforcement services to the citizens of Beverly. While maintaining respect for individual rights, human dignity, cultural diversity and community values, we pledge to sustain a working partnership with our community to protect life and property, and to maintain a safe and peaceful environment for all.

DEPARTMENT GOALS

- Enhance Safety for Our Citizens
- Ensure Professional and Respectful Police Services
- Be Accountable to the Community
- Encourage Community Involvement
- Educate and Inform our Citizens
- Maintain An Effective Police Presence in our Schools
- Provide Great Leadership at Every Level



ORGANIZATIONAL CHART





PATROL DIVISION

Patrol Division
Commander
Captain M. Devlin

Division I
OIC: Lt. D. Faustino
PS: Sgt. D. Brown
PS: Sgt. E. Hathon

Ofc. C. Brennan

Ofc. M. Bucci

Ofc. S. Cecchini

Ofc. P. Fidrych

Ofc. C. Ganey

Ofc. M. Gelineau

Ofc. D. Grimes

Ofc. S. Leblanc

Ofc. G. Little

Ofc. M. Malone

Ofc. M. Marino

Ofc. E. Schultz

Ofc. C. Stanton

Ofc. F. Wojick

Ofc. J. Vitale

Division II
OIC: Lt. D. Richardson
OIC: Lt. J. Shairs
PS: Sgt. M. Backstrom
PS: Sgt. A. DiRuzza
PS: Sgt. M. Panjwani

Ofc. E. Abrahamson

Ofc. A. Clarizia

Ofc. D. DiVincenzo

Ofc. D. Gagnon

Ofc. S. Lane

Ofc. D. Nicholson

Ofc. B. Nickerson

Ofc. J. Santamaria

Ofc. D. Skerry (RET FY20)

Ofc. T. Slavin

Ofc. J. Spitaleri

Ofc. K. Thomasson

Ofc. C. Twombly

Division III
OIC: Lt. W. Page
OIC: Lt. J. Shairs
PS: Sgt. M. Backstrom
PS: Sgt. A. DiRuzza
PS: Sgt. M. Panjwani

Ofc. J. Archambault

Ofc. M. Broderick

Ofc. W. Cargile

Ofc. K. Coletti

Ofc. M. Flynn

Ofc. R. Ganey

Ofc. H. Geary

Ofc. E. Goodell

Ofc. R. Hegarty

Ofc. B. Long

Ofc. J. McCarthy

Ofc. S. O'Brien



PATROL DIVISION

The Patrol Division of Beverly Police Department represents the largest and most visible division and is the division responsible for the bulk of our public safety endeavors. Beverly police officers are highly trained, competent professionals who must rely on their specialized skills daily to overcome a myriad of situations, ensuring public safety as they do so. Each patrol officer understands that he or she may be asked to make a split-second, life or death decision in order to protect the public that he or she serves. The citizens of Beverly expect a very high level of service and performance from patrol officers, and the Patrol Division continuously strives to achieve that professional, high quality police service for our citizens.

The Beverly Police Department continues to embrace the Community Policing approach to law enforcement. We continue to meet with citizen groups in all neighborhoods of the city, as this allows police officers to interact with citizens in an informal group setting, and to focus on neighborhood concerns. The Police Liaison program, implemented a few years ago in specific areas such as elder services, public housing and Beverly Hospital, has been significant in focusing police attention on targeted problems.

The department continues to conduct Directed Patrols, which rely on comprehensive statistical analysis of specific geographical areas along with citizen input to allocate patrol resources to where they are needed most. Directed Patrols require patrol officers to provide visible and proactive patrols with the purposes of crime prevention, traffic safety and improving quality of life issues. Directed Patrols target a specific area and/or community need. They can be uniformed or plain-clothes officers, using cruiser, foot or bicycle patrols. Directed Patrols have been effectively deployed by the department to address problems such as liquor establishment disturbances, disorderly off-campus college houses, motor vehicle break-ins, speeding complaints, homeless related issues, illegal narcotic activity and seasonal problem hotspots such as parks, playgrounds and the waterfront.

The Beverly Police Patrol Division is made up of one Captain who serves as the Patrol Commander, four Lieutenants who are in charge of each shift, and five Sergeants who serve as Patrol Supervisors. These supervisors are responsible for ensuring appropriate response to calls for service, emergencies, medical aids, domestic violence calls, motor vehicle accidents, directed patrols, etc. and community involvement by the patrol division.

There are forty-one (37) officers assigned to the patrol division. The patrol officers are divided into three divisions: Division A (Midnights), Division B (days) and Division C (evenings). Division B and Division C receive additional assistance from the Traffic Department, the Community Impact Unit and the Criminal Investigation Division. Each shift is commanded by one Officer in Charge (Lieutenant), and one Patrol Supervisor (Sergeant).

FY2020 saw the Patrol Division respond to **23,875** calls for service. Division A responded to **7,681** calls, Division B responded to **8,473** calls, and Division C responded to **7,721** calls. Additionally, patrol officers made **300** arrests, placed **32** people in protective custody, answered **1,009** alarms, **381** domestics violence calls, **670** car accidents and **84** heroin related calls.



CRIMINAL INVESTIGATION DIVISION

The Criminal Investigation Division was affected by the Coronavirus like all the other divisions in the BPD. During one investigation, several of our detectives were exposed to a subject who tested positive to COVID-19. Our detectives all tested negative, but were out of work for a week.

CID successfully teamed with the Detectives from Massachusetts State Police to apprehend an individual who allegedly committed a homicide in our city in March 2020. It has been our only homicide since the last annual reporting cycle.

While narcotics enforcement is still a priority, our investigations and personal interactions with potential suspects were curtailed for the safety of our detectives and the public. Our department responded to seventy (70) heroin related calls from July 2019 to date. Also, sixty-nine (69) overdoses were investigated, some of which may not have been heroin related.

Detectives are available on an on-call basis when necessary. CID responded to "callouts" fifty-one times during this period. We responded to sixty-seven (67) death scenes, ranging from homicide, suicide, accident and natural causes of death.

Tragically, we lost one of our detectives in September 2019 suddenly and unexpectedly. It was a shock to our department as a whole and our division specifically.

All our department personnel have had to persevere through stress and restrictions of not only COVID-19, but also the increasingly negative attitude, both locally and nationally, toward police officers. Through it all, officers from the Beverly Police Department have continued to perform their duties in a professional, competent and compassionate manner, with the goal of always ensuring public, and officer safety at all times. These are truly unprecedented times and this department has met the challenges they face on a daily basis.



SERVICES DIVISION

The Services Division provides a multitude of services that complement the Patrol and Criminal Investigation Divisions and coordinates community relations for the Beverly Police Department. Within the division are, the Crime Analysis Unit, the Public Information Unit and the Training Unit. The division is also responsible for fleet maintenance, equipment management, training, and other areas that support the Patrol and Criminal Investigation Divisions.

FY2020 was a busy and productive year for the Services Division. Programs that had been initiated in years past continued to flourish and new programs were instituted.

The department continues to embrace new technology in an effort to provide our citizens the best service possible and make communicating with citizens more efficient:

- The Crime Analysis Unit continues to provide monthly crime reports to all police personnel as well as surrounding agencies including Peabody Police, Salem Police, Wenham Police, Ipswich Police, Topsfield Police, Marblehead Police, Lynn Police, Saugus Police and Mass State Police Violent Apprehension Squad. The Beverly Police Department Crime Report provides Officers from this department with information on recently arrested or summonsed individuals, as well as recently issued warrants each month. The Crime Analysis Unit also issues quarterly CompStat reports. The CompStat model is a management process within a performance management framework that synthesizes analysis of crime and disorder data, strategic problem solving, and a clear accountability structure. Ideally, CompStat facilitates accurate and timely analysis of crime and disorder data, which is used to identify crime patterns and problems. Based on this analysis, tailored responses are implemented through rapid deployment of personnel and resources. An accountability structure is key to ensuring the analysis is acted upon and the responses are implemented correctly as well as assessing whether responses are effective in reducing crime and disorder.
- The Beverly Police website continues to be updated on a regular basis to provide residents with the most up to date information as possible. The forms that were added last year to allow residents to more easily submit tips and request reports are now being used on a regular basis and we have received over 75 web tips since December.
- The Beverly Police continue to provide an app, available for iPhones and Android phones, to allow citizens to easily communicate with the police while on the go. Features include one touch phone calls to the department, immediate directions to the police station from your current location, and readily available forms for submitting tips, commendations, or concerns.
- The department continues to use Swift911, a reverse 911 emergency notification system used to update citizens with important information during critical incidents or whenever necessary. The police department was able to use this system in November 2011 to identify the victim of stolen property recovered by an officer, which then led to the arrest of the male and female found in possession of that property, who were responsible for numerous motor vehicle break ins.



- The department also continues to use social media such as Facebook and Twitter to provide information and communicate with our citizens. We are working to create a social media team, a group of officers dedicated to communicating with citizens and providing important information around the clock.



DOMESTIC VIOLENCE

The Beverly Police Department's Domestic Violence Unit was established in 2002 in response to the growing epidemic of domestic violence cases within the City of Beverly. Our first response was to enter into collaboration with Healing Abuse Working for Change (HAWC) in order to enhance the delivery of services to victims of domestic violence, stalking and sexual assault within the city.

Our main goal has always been victim safety and offender accountability, with victim safety being paramount. The domestic violence unit provides specialized domestic violence training to all sworn and reserve officers as well as to community partners. We have gone from having no specific services within the city for victims of domestic violence to having a specialized domestic violence Sergeant in charge of the unit.

Our Coordinated Community Response includes being a part of the Salem High Risk Team, a team comprised of department heads from within the criminal justice system (i.e. Probation, Police, Prosecution, Family court, House of Corrections, victim witness advocates, and HAWC advocates). This team's goal is to flag cases that have a high likelihood of homicide in order to put preventive measures in place to enhance victim safety and deter a potential homicide.

We have established a Sexual Assault Response Team which is a dedicated team of officers, detectives and advocates who are specially trained in sexual assault response and investigation and respond to every sexual assault incident.

The City of Beverly's Police Department is meeting the challenges of this epidemic by providing specialized training to officers and the community as well as educating victims of domestic violence, stalking and sexual assault on what their options are and the relief available to them through our specialized office.



DOMESTIC VIOLENCE UNIT		
Case Characteristics	FY2019	FY2020
Domestic – Verbal Argument	204	209
Domestic – Drunkenness	7	10
Domestic – Abuse/Neglect	8	11
Domestic – Abuse/No 209A	105	116
Domestic - Abuse 209A Violation	25	23
Child Abuse/Neglect	1	4
Emergency 209A Application	3	1



TRAFFIC & SAFETY

The Traffic Division is comprised of **3** full-time employees. The Traffic Division is supervised by Sgt. Michael Henebury. **2** officers are assigned to traffic enforcement.

Traffic Accidents

The Beverly Police Department investigated **670** motor vehicle accidents in FY2019, a decrease of **98** from **768** in FY2019. Of those accidents, **50** involved personal injury, **1** involved a fatality, and **274** were just property damage related. The remaining **229** accidents involved minor if any damage and required no written report.

Hit and Run

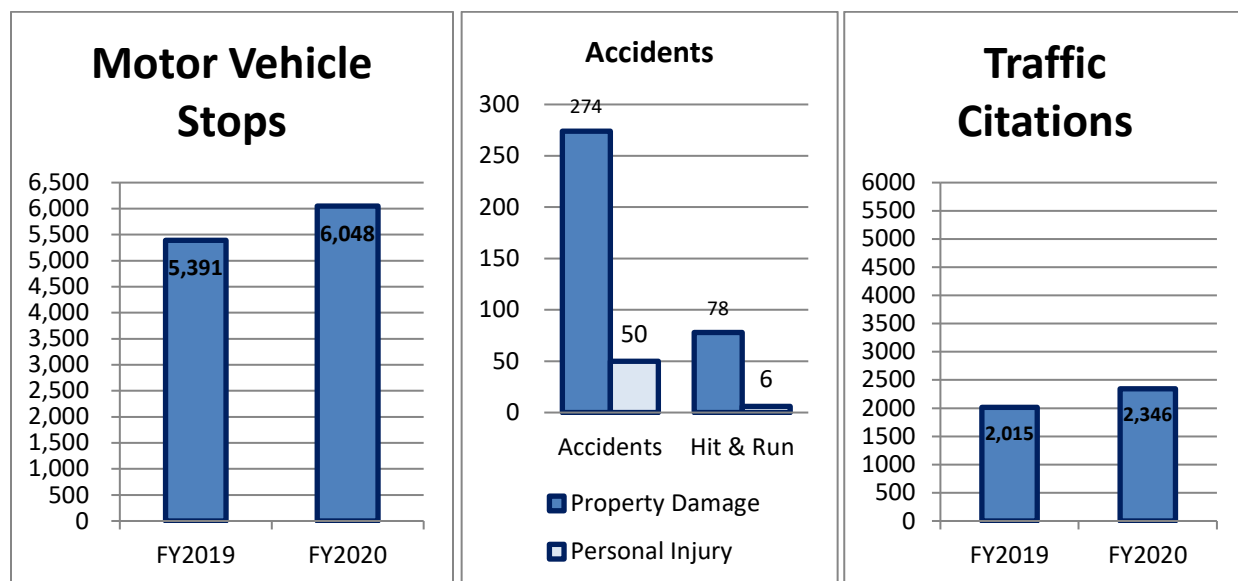
In FY2020, **84** hit and run traffic accidents were reported to the Police Department, a **(5%)** decrease from **88** in FY2019. Of those accidents, **6** resulted in personal injury, whereas **78** were related to property damage.

OUI (Operating Under the Influence) Enforcement

The Police Department engaged in cooperative saturation alcohol enforcement patrols during the past year while participating in the Safe Streets Program. As a result of those enforcement efforts, a total of **9** OUI arrests were made in FY2020, a decrease of **50%** from **18** in FY2019.

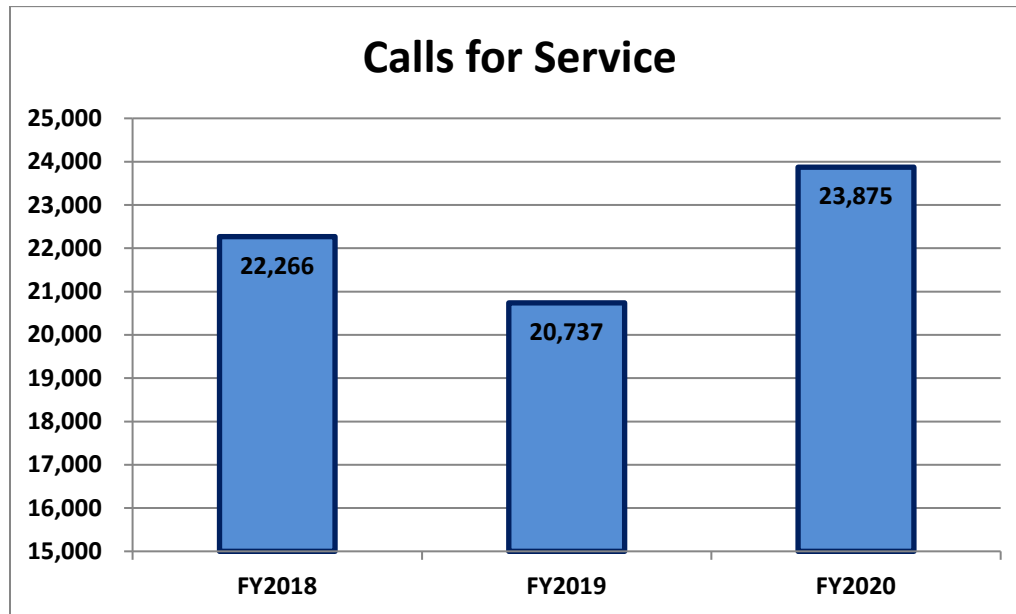
Traffic Citations

The Beverly Police Department issued **2,346** traffic citations in FY2020, a **(16%)** increase from **2,015** in FY2019.





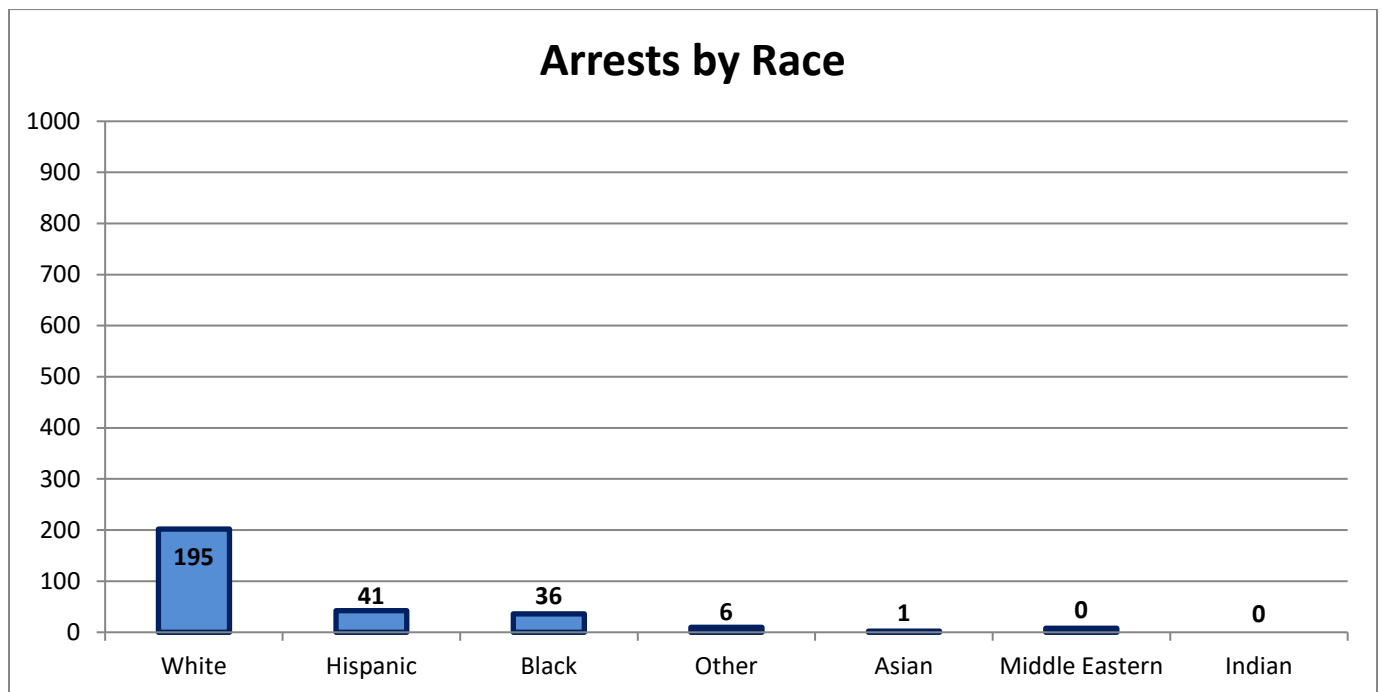
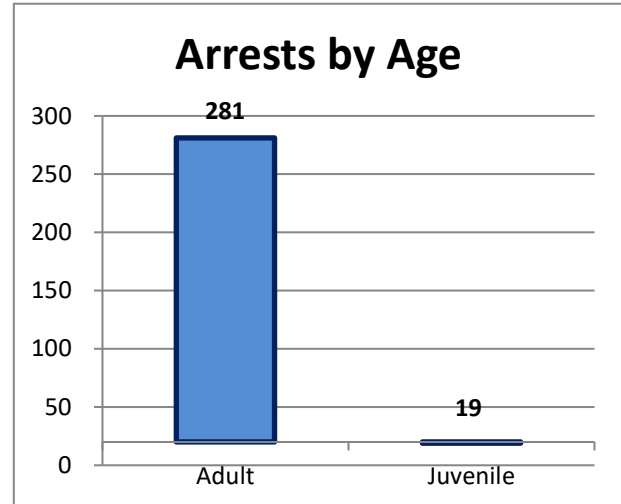
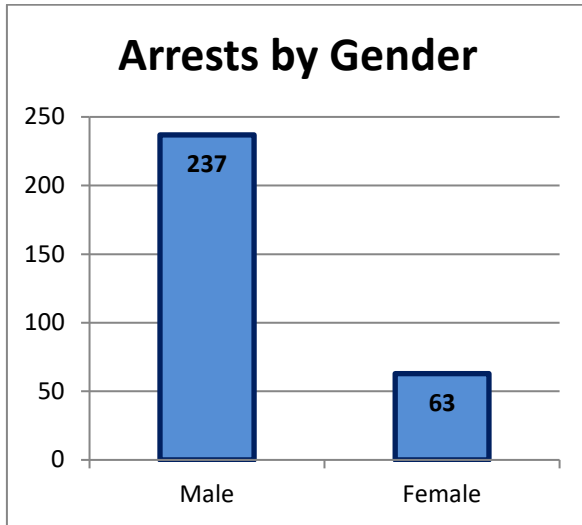
FISCAL YEAR 2020 CRIME DATA



TOP TEN SERVICE CALLS FY2020		
Description	Calls	Chg From FY19
Motor Vehicle Stop	6,048	+657
Medical Aids	1,962	-345
Disturbances	1,225	+89
Suspicious Activity	1,134	-46
Alarms	1,009	-184
Check Well Being	672	+91
Motor Vehicle Accident	670	-98
Domestic Incidents	387	+24
Parking Complaint	327	-6
Assist Citizen	290	-112



FISCAL YEAR 2020 ARREST DATA

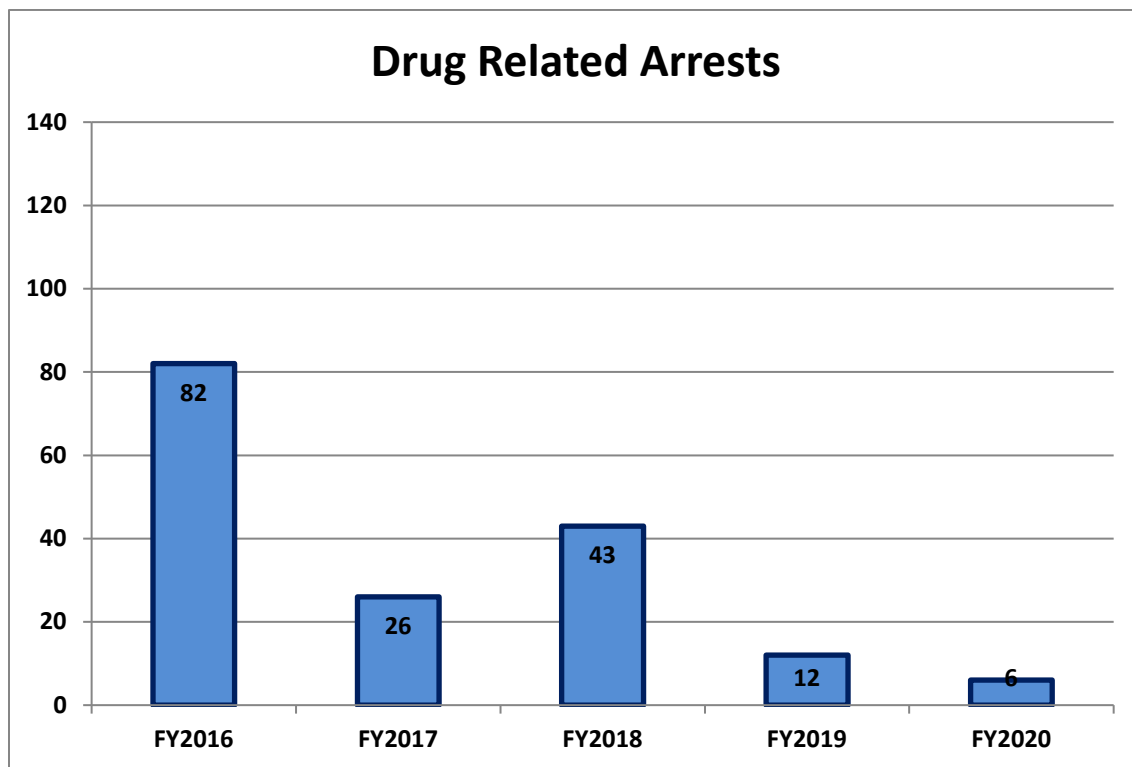




DRUG ARRESTS

Drug related arrests decreased in FY2020, from **12** in FY2019 to **6**.

There were **5** males arrested for drug related charges in FY2020, compared to **1** female and **6** adults, compared to **0** juveniles. A charge of either, possession of Class A (commonly heroin), and possession of Class B (commonly cocaine) was involved in most of the 6 arrests in FY2020. Overdoses increased slightly in FY20, with officers responding to **63** reported overdose calls **5** of which were fatal. These numbers were up 1 from 62 overdoses reported in FY19 but, fatal OD's decreased with 11 being reported the previous fiscal year.





VIOLENT CRIME DATA

In FY2020, calls for service involving violent crime in the City of Beverly increased **12%**, from **81** incidents in FY2019 to **87**. Compared to the last five years, violent crime in FY2020 was **52%** below average. Overall, the Beverly Police Department charged **63** people with violent crimes including **47** arrests (down **25%**) and **21** warrant applications (down **2%**) from the five year average.

Assaults

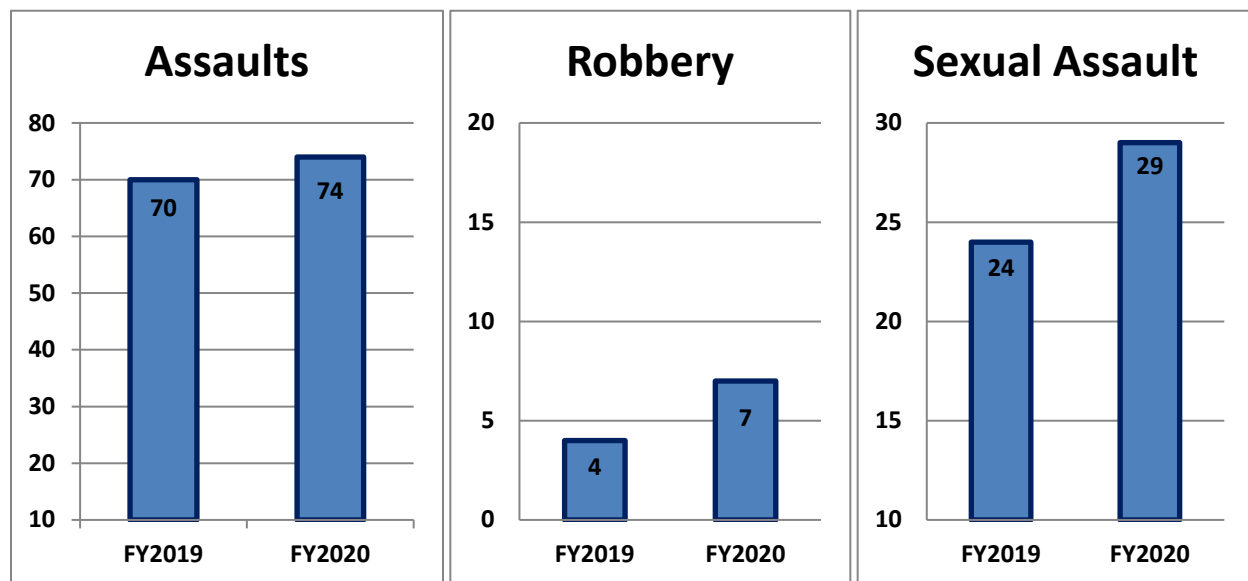
In FY2020, incidents involving assault increased slightly from **70** in FY2019 to **74**, even with the average compared to the past five years. The Beverly Police Department made **39** arrests in FY20 (down **56%**) when compared to **89** in FY19, and applied for **13** warrants (down 65%) when compared, to **37** in FY19 in incidents involving assault.

Robbery

An increase in the number of robberies reported can be seen in FY2020. The number in overall robberies rose in FY20 with **7** being reported, as compared to **4** In FY19. There was a slight change in armed robberies as numbers increased from **2** in FY19 to **3** in FY20.

Rape/Sexual Assault

Reports of sexual assault increased in FY2020. In FY2019 there were **24** reports of sexual assault in Beverly compared to **29** in FY2020. Reports of Rape also saw a decrease in FY20 down from **6** in FY19 to **5**.





PROPERTY CRIME DATA

In FY2020, the City of Beverly experienced a **18%** decrease in overall property crimes, from **368** incidents in FY2019 to **303**.

Burglary

The number of burglaries decreased **33%** from **27** in FY2019 to **18** in FY2020.

Larceny

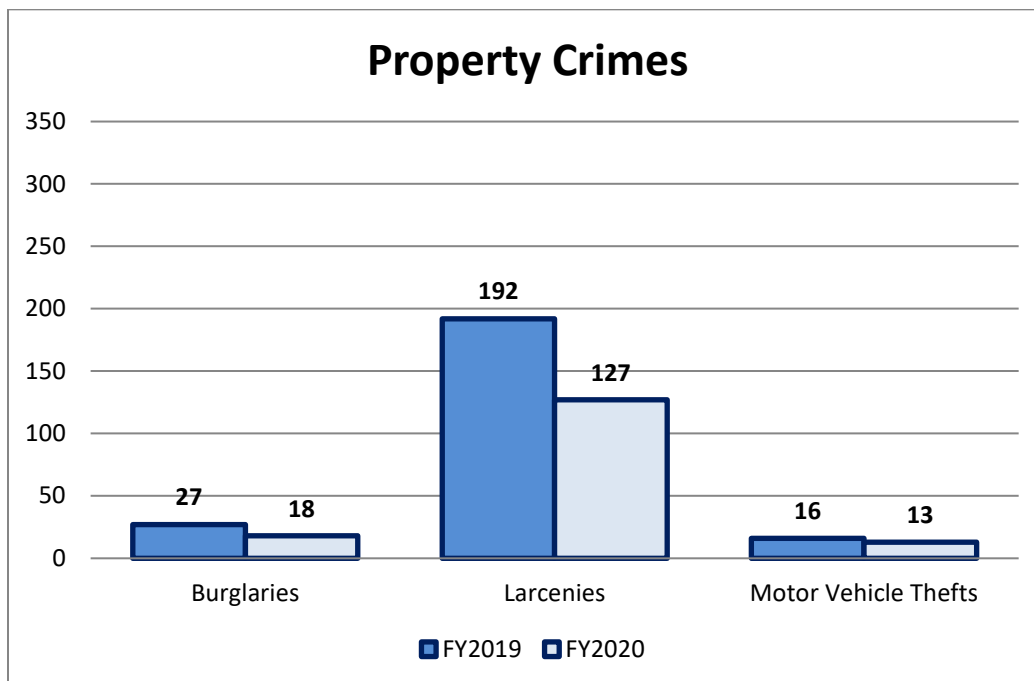
In comparison to burglaries, the number of larcenies reported decreased **34%** from **192** in FY2019 to **127** in FY2020.

Motor Vehicle Thefts

Motor vehicle thefts decreased by 3 in FY20, from **16** in FY2019 to **13** in FY2020. Compared to the past five years, motor vehicle thefts in FY2019 were **33%** below average.

Arsons

There were **2** reported incidents of arson in FY2020, this is an increase from no incidents reported in FY2019. This is consistent with the average of the last five years.





JUVENILE CRIME DATA

Juvenile Arrests

Juvenile arrests in FY2020 increased from FY2019 going from **10** to **19** in FY2020. Of the **19** juvenile arrests in FY2020, **50%** occurred between the hours of 8am and 4pm while **50%** took place between 4pm and Midnight. In contrast, the hours of Midnight to 8am accounted for **0%** of all juvenile arrests.

Juvenile Drug Arrests

Juvenile drug arrests stayed at zero in FY2020, mirroring reported juvenile drug arrests in FY2019.

Juvenile Missing Reports

In FY2020, a decrease can be seen involving the number of juveniles reported missing. There were **29** reports of missing juveniles in FY2020 which is a **47%** decrease compared to **55** in FY2019.

