



**BEVERLY  
POLICE  
DEPARTMENT**

**FY 2022**

The Beverly Police Department is pleased to present to you the crime statistics for the City of Beverly for Fiscal Year 2022.

**FISCAL YEAR REPORT**



# TABLE OF CONTENTS

A Message from Chief John LeLacheur.....	3
Department Mission Statement & Goals.....	6
Organizational Charts.....	7
Patrol Division.....	9
Criminal Investigation Division.....	10
Operations Division.....	11
Domestic Violence.....	13
Traffic & Safety.....	14
Crime Data.....	15



## A MESSAGE FROM THE CHIEF

Beverly is a great place to live and work. The Beverly Police Department mission statement reads in part, “While maintaining respect for individual rights, human dignity, cultural diversity and community values, we pledge to sustain a working partnership with our community to protect life and property, and to maintain a safe and peaceful environment for all.” Our community’s safe and family friendly environment could not be achieved without the talent and commitment of the men and women of the Beverly Police Department and the partnerships we share with our citizens. Beverly was named one of the safest cities in the Commonwealth to live in.

In August of 2021 we moved into our new police station at 175 Elliott Street. This move was a major undertaking in that we moved all operations from a building built in 1938 to our new facility. This meant all old files, evidence and equipment had to be packed and relocated. We went from a less than ten thousand (10,000) square foot building to a thirty-one thousand (31,000) square foot state of the art facility. The new building, once all of systems are complete, will be a net zero facility, using solar and geothermal cooling and heating. The energy savings will be significant.

We have also purchased three (3) electric and hybrid vehicles in an attempt to reduce our carbon footprint. We have also been able to increase our workforce with the support of the Mayor and City Council. Our goal is to reduce response time to calls, monitor and enforce the flow of traffic and better patrol our neighborhoods.

The effectiveness of our citizen-police partnerships can be sensed when you walk through our neighborhoods in the evening or enjoy a night out in our downtown restaurants. The Beverly Police Community Advisory Committee has volunteered their time and effort to consistently implement the philosophy of “Broken Windows.” In partnership we have removed graffiti from our streets and neighborhoods, reduced the volume of speeding and dangerous drivers on our roads, and provided education to reduce drug abuse. Each of these initiatives has added to the high quality of life in our city. We are adding additional equipment to our cruisers to enforce the new citywide 25MPH speed limit.

FY 2021 recorded an increase in calls for police services. Violent crime in Beverly is down which is consistent with the national trend, for cities our size. Beverly experienced a reduction in most property related crimes as well. We have not been immune to the current opioid crisis gripping this part of the Country. Our officers have saved many lives through the use of NARCAN and other first aid methods. We continue to train our officers in these life saving techniques and will continue to explore new ways of preserving life. We were successful in receiving a twenty-thousand (\$20,000.00) grant to continue to train other City Departments in the use of NARCAN and will be able to re-supply our officers as needed. Both the amount of overdoses we responded to and deaths associated with illegal drugs has declined in the City.

We will maintain two School Resource Officers we will continue to have two (2) full-time SROs for the 2022-2023 school year.

The rapid dissemination of public safety information to our citizens was enhanced by synchronizing communication technology and social media applications. The city’s Swift Reach phone system, BPD Facebook, Twitter, MyPD Smartphone application, and the Beverly Police Web site [www.beverlypd.org](http://www.beverlypd.org) were developed as an effective means to provide timely and concise



community safety information. Every citizen is strongly encouraged to log in or sign up for these important services. We remind everyone that incidents and crimes should be reported immediately to the police station by calling either 911 in an emergency, or we now also have the ability to receive text messages to 911 if and when you are unable to speak. This option can be of great assistance when reporting a crime in progress. For business or non-emergency calls, 978-922-1212 is number to call. Social media sites are not monitored twenty-four (24) hours a day.

A newer Statewide 911 system has been added to our dispatch center. With the newer equipment we now receive all of our cellular calls directly at the Police Station. Cellular calls used to be routed through a central receiving station and then transferred to Beverly. The new system allows our officers to process the calls directly and immediately dispatch police, fire and or ambulance without delay.

We were unable to recognize the students who participate in our yearly art contest for the Community Advisory Committee. We also resumed our monthly CAC meetings via a digital platform. The Community Impact Unit has had great success this year working within our neighborhoods and responding to issues that have been raised by members of the community. The Police Department was also awarded a \$200,000 grant from the Massachusetts Department of Mental Health to hire two Jail Diversion Workers. The clinicians will assist those with mental health disorders and assist with overdose follow-up treatment. We recently received a second grant so that we will be able to add a second clinician to divide the work done in the six (6) communities. With the addition of one clinician we were able to divide the six communities which will allow for better results for our citizens. Working in hand with our Community Impact Unit the clinician can respond directed to calls for service. The Impact Officers with the clinician and other area partners do follow-ups with individuals who have suffered from an overdose. The follow-ups are very successful in getting people into treatment. We also partner with every police department in Essex County which allows us to know if a Beverly resident may have overdosed in another community. We are able to also pass along information to those other departments as needed.

The Beverly Police Department remains in self-assessment as we move toward Accreditation. We are currently working with a vendor in modernizing our policies to meet the current accreditation standards of the Commonwealth and the new Police Officer Standards Commission. We have trained more officers in Mental Health Response Team training. Several more will be trained this fiscal year. We have also pledged with the International Association of Chiefs of Police to train eighty percent (80%) of our officers in Mental Health First Aid. We also remain a member of the North East Massachusetts Law Enforcement Council (NEMLEC). Officers from Beverly have responded to several major incidents to assist in our mutual aid commitment.

The men and women of the Beverly Police Department look forward to providing our community with unmatched excellence in law enforcement services.

Beverly has been very supportive of our community engagement efforts. Many citizens have come into the station, or sent cards thanking our officers. It is now up to the Police Department to continue to work with the community to maintain a professional and community based relationship. I sit on the City's Human Rights Committee as well as several other committees working on equity in our City. I believe by working with our committee we can resolve, or at least understand the problems some residents face. As I have said on many occasions, "We will not tolerate intolerance in Beverly."



In closing, the department would like to recognize our recently retired officers, Lieutenants David Richardson and David Faustino retired in January after many years of service to the City of Beverly. They performed with the utmost professionalism for over the years. I thank them for their dedication and service to both the department and community.

COVID-19 is something we still deal with daily. We still respond to serious medical situations, car accidents, domestic distances, sometimes not knowing if there may be a COVID-19 positive individual. As a result, almost every member of the department has been impacted. I thank the men and women, sworn and civilian for their dedicated service.

I am honored to serve this great city and to be a member of such a professional and committed organization of men and women.

John G. LeLacheur  
Chief of Police  
[beverlychief@bevelyma.gov](mailto:beverlychief@bevelyma.gov)  
Twitter: @ChiefLeLacheur



## **MISSION STATEMENT**

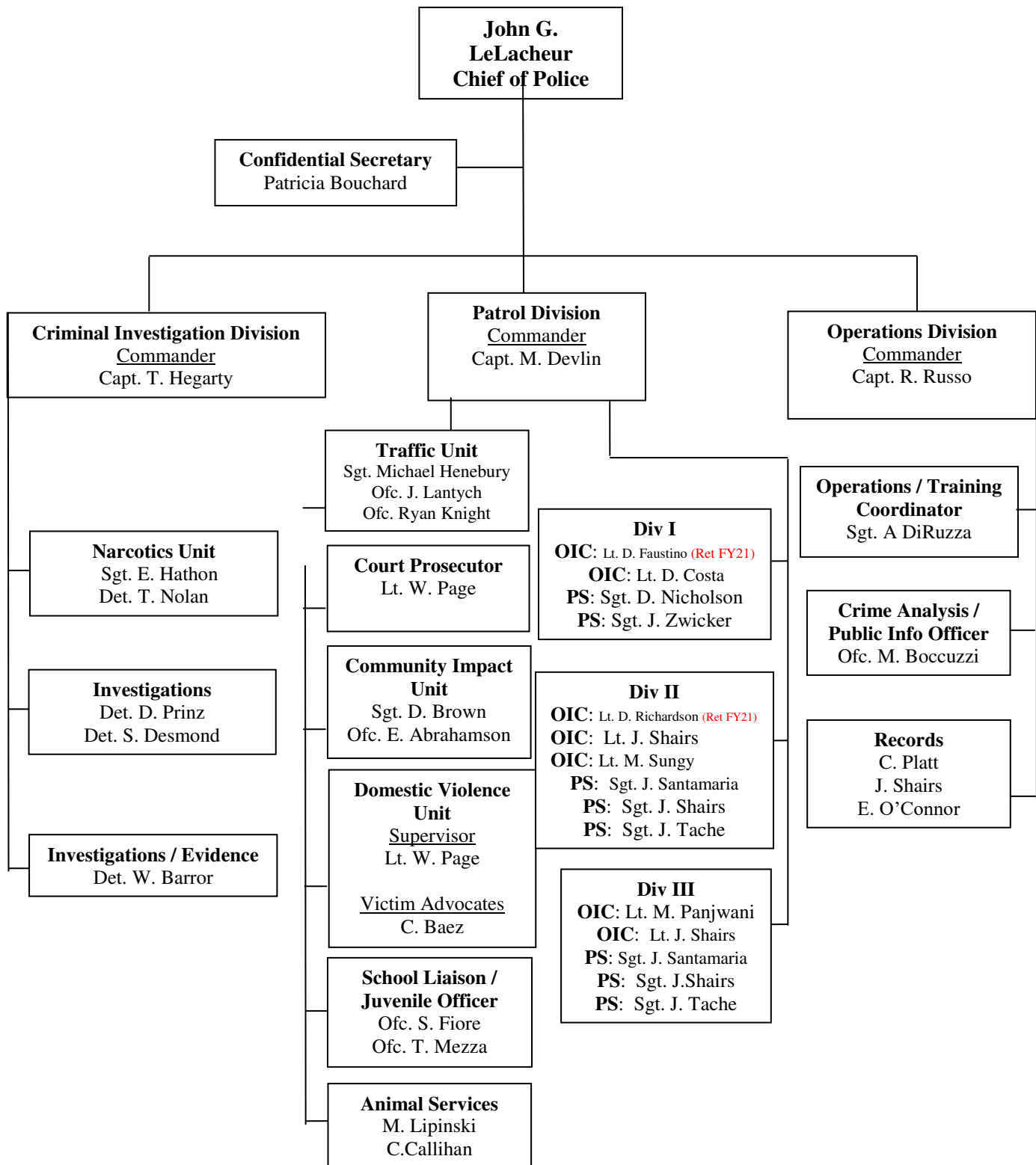
The Beverly Police Department is an organization comprised of professional men and women who are ethically and morally dedicated to providing the finest quality of law enforcement services to the citizens of Beverly. While maintaining respect for individual rights, human dignity, cultural diversity and community values, we pledge to sustain a working partnership with our community to protect life and property, and to maintain a safe and peaceful environment for all.

## **DEPARTMENT GOALS**

- Enhance Safety for Our Citizens
- Ensure Professional and Respectful Police Services
- Be Accountable to the Community
- Encourage Community Involvement
- Educate and Inform our Citizens
- Maintain An Effective Police Presence in our Schools
- Provide Great Leadership at Every Level



# ORGANIZATIONAL CHART





**PATROL DIVISION**

**Patrol Division  
Commander**  
Captain M. Devlin

**Division I**  
**OIC:** Lt. D. Costa  
**PS:** Sgt. D. Nicholson  
**PS:** Sgt. Justin Zwicker

**Division II**  
**OIC:** Lt. Joseph Shairs  
**OIC:** Lt. M. Sungy  
**PS:** Sgt. J. Santamaria  
**PS:** Sgt. Justin Shairs  
**PS:** Sgt. J. Tache

**Division III**  
**OIC:** Lt. M. Panjwani  
**OIC:** Lt. Joseph Shairs  
**PS:** Sgt. J. Santamaria  
**PS:** Sgt. Justin Shairs  
**PS:** Sgt. J. Tache

- Ofc. J. Atherton
- Ofc. M. Bucci
- Ofc. A. Cecchini
- Ofc. S. Cecchini
- Ofc. P. Fidrych
- Ofc. S. Gannon
- Ofc. D. Grimes
- Ofc. T. Leblanc
- Ofc. G. Little
- Ofc. J. Marrs
- Ofc. J. Page
- Ofc. E. Schultz
- Ofc. M. Theriault
- Ofc. F. Wojick
- Ofc. J. Vitale

- Ofc. M. Broderick
- Ofc. A. Clarizia
- Ofc. W. Cargile
- Ofc. D. DiVincenzo
- Ofc. D. Gagnon
- Ofc. R. Hegarty
- Ofc. S. Lane
- Ofc. B. Nickerson
- Ofc. T. Slavin
- Ofc. J. Spitaleri
- Ofc. K. Thomasson
- Ofc. C. Twombly

- Ofc. J. Archambault
- Ofc. N. Bencal Phillips
- Ofc. K. Coletti
- Ofc. M. Flynn
- Ofc. C. Ganey
- Ofc. H. Geary
- Ofc. M. Gelineau
- Ofc. E. Goodell
- Ofc. S. Leblanc
- Ofc. M. Malone
- Ofc. M. Marino
- Ofc. J. McCarthy
- Ofc. S. O'Brien
- Ofc. C. Stanton





## PATROL DIVISION

The Patrol Division of Beverly Police Department represents the largest and most visible division and is the division responsible for the bulk of our public safety endeavors.. Beverly police officers are highly trained, competent professionals who must rely on their specialized skills daily to overcome a myriad of situations, ensuring public safety as they do so. Each patrol officer understands that he or she may be asked to make a split-second, life or death decision in order to protect the public that he or she serves. The citizens of Beverly expect a very high level of service and performance from patrol officers, and the Patrol Division continuously strives to achieve that professional, high quality police service for our citizens.

The Beverly Police Department continues to embrace the Community Policing approach to law enforcement. We continue to meet with citizen groups in all neighborhoods of the city, as this allows police officers to interact with citizens in an informal group setting, and to focus on neighborhood concerns. The Police Liaison program, implemented a few years ago in specific areas such as elder services, public housing and Beverly Hospital, has been significant in focusing police attention on targeted problems.

The department continues to conduct Directed Patrols, which rely on comprehensive statistical analysis of specific geographical areas along with citizen input to allocate patrol resources to where they are needed most. Directed Patrols require patrol officers to provide visible and proactive patrols with the purposes of crime prevention, traffic safety and improving quality of life issues. Directed Patrols target a specific area and/or community need. They can be uniformed or plain-clothes officers, using cruiser, foot or bicycle patrols. Directed Patrols have been effectively deployed by the department to address problems such as liquor establishment disturbances, disorderly off-campus college houses, motor vehicle break-ins, speeding complaints, homeless related issues, illegal narcotic activity and seasonal problem hotspots such as parks, playgrounds and the waterfront.

The Beverly Police Patrol Division is made up of one Captain who serves as the Patrol Commander, four Lieutenants who are in charge of each shift, and five Sergeants who serve as Patrol Supervisors. These supervisors are responsible for ensuring appropriate response to calls for service, emergencies, medical aids, domestic violence calls, motor vehicle accidents, directed patrols, etc. and community involvement by the patrol division.

There are forty-one (41) officers assigned to the patrol division. The patrol officers are divided into three divisions: Division A (Midnights), Division B (days) and Division C (evenings). Division B and Division C receive additional assistance from the Traffic Department, the Community Impact Unit and the Criminal Investigation Division. Each shift is commanded by one Officer in Charge (Lieutenant), and one Patrol Supervisor (Sergeant).

FY2022 saw the Patrol Division respond to **21,770** calls for service. Division A responded to **6,900** calls, Division B responded to **8,055** calls, and Division C responded to **6,815** calls. Additionally, patrol officers made **254** arrests, placed **18** people in protective custody, answered **913** alarms, **341** domestic violence calls, **809** car accidents and **66** heroin related calls.



## CRIMINAL INVESTIGATION DIVISION

Because of the continued threat of the COVID-19 virus and its variations, our investigations and personal interactions with potential suspects were modified for the safety of our detectives and the public. However, detectives, and all officers of the department came to work every day during this ongoing pandemic.

Our department responded to forty two (42) heroin related calls from July 2021 to June 2022, which is slightly less than last year. Also, sixty-two (62) overdoses were investigated, some of which may not have been heroin related.

Our detectives investigated approximately 100 cases of fraud, including check fraud, identity theft and wire fraud. The bulk of these were cases of identity theft. CID also investigated approximately twenty five (25) reported cases of a sexual assault nature, ranging from indecent exposure to rape.

Detectives are available on an on-call basis when necessary, making detectives available 24/7. CID responded to “callouts” approximately forty (40) times during this period. We responded to fifty six (56) death scenes, ranging from, suicide, accident and natural causes of death. We had no homicides during this reporting period.

We were fortunate to be moved into our new station in August 2021. Our Criminal Investigation Division had been in various satellite offices for the past two decades. We are capable now of working more closely with all members of our department under one roof. As part of the transition, CID was responsible to audit, move and re-categorize thousands of pieces of evidence into our new evidence room. We look forward to the future in our new station.



## OPERATIONS DIVISION

The Operations Division provides a multitude of services that complement the Patrol and Criminal Investigation Divisions and coordinates community relations for the Beverly Police Department. Within the division are, the Crime Analysis Unit, the Public Information Unit and the Training Unit. The division is also responsible for fleet maintenance, equipment management, training, and other areas that support the Patrol and Criminal Investigation Divisions.

FY2022 was a busy and productive year for the Services Division. Programs that had been initiated in years past continued to flourish and new programs were instituted.

The department continues to embrace new technology in an effort to provide our citizens the best service possible and make communicating with citizens more efficient:

- The Crime Analysis Unit continues to provide monthly crime reports to all police personnel as well as surrounding agencies including Peabody Police, Salem Police, Wenham Police, Ipswich Police, Topsfield Police, Marblehead Police, Lynn Police, Saugus Police and Mass State Police Violent Apprehension Squad. The Beverly Police Department Crime Report provides Officers from this department with information on recently arrested or summonsed individuals, as well as recently issued warrants each month. The Crime Analysis Unit also issues quarterly CompStat reports. The CompStat model is a management process within a performance management framework that synthesizes analysis of crime and disorder data, strategic problem solving, and a clear accountability structure. Ideally, CompStat facilitates accurate and timely analysis of crime and disorder data, which is used to identify crime patterns and problems. Based on this analysis, tailored responses are implemented through rapid deployment of personnel and resources. An accountability structure is key to ensuring the analysis is acted upon and the responses are implemented correctly as well as assessing whether responses are effective in reducing crime and disorder.
- The Beverly Police website continues to be updated on a regular basis to provide residents with the most up to date information as possible. The forms that were added last year to allow residents to more easily submit tips and request reports are now being used on a regular basis and we have received over 50 web tips since December.
- The Beverly Police continue to provide an app, available for iPhones and Android phones, to allow citizens to easily communicate with the police while on the go. Features include one touch phone calls to the department, immediate directions to the police station from your current location, and readily available forms for submitting tips, commendations, or concerns.
- The department continues to use Swift911, a reverse 911 emergency notification system used to update citizens with important information during critical incidents or whenever necessary. The police department was able to use this system in November 2011 to identify the victim of stolen property recovered by an officer, which then led to the arrest of the male and female found in possession of that property, who were responsible for numerous motor vehicle break ins.



- The department also continues to use social media such as Facebook and Twitter to provide information and communicate with our citizens. We are working to create a social media team, a group of officers dedicated to communicating with citizens and providing important information around the clock.



## DOMESTIC VIOLENCE

The Beverly Police Department's Domestic Violence Unit was established in 2002 in response to the growing epidemic of domestic violence cases within the City of Beverly. Our first response was to enter into collaboration with **H**ealing **A**buse **W**orking for **C**hange (HAWC) in order to enhance the delivery of services to victims of domestic violence, stalking and sexual assault within the city.

Our main goal has always been victim safety and offender accountability, with victim safety being paramount. The domestic violence unit provides specialized domestic violence training to all sworn and reserve officers as well as to community partners. We have gone from having no specific services within the city for victims of domestic violence to having a specialized domestic violence Sergeant in charge of the unit.

Our Coordinated Community Response includes being a part of the Salem High Risk Team, a team comprised of department heads from within the criminal justice system (i.e. Probation, Police, Prosecution, Family court, House of Corrections, victim witness advocates, and HAWC advocates). This team's goal is to flag cases that have a high likelihood of homicide in order to put preventive measures in place to enhance victim safety and deter a potential homicide.

We have established a Sexual Assault Response Team which is a dedicated team of officers, detectives and advocates who are specially trained in sexual assault response and investigation and respond to every sexual assault incident.

The City of Beverly's Police Department is meeting the challenges of this epidemic by providing specialized training to officers and the community as well as educating victims of domestic violence, stalking and sexual assault on what their options are and the relief available to them through our specialized office.



DOMESTIC VIOLENCE UNIT		
Case Characteristics	FY2021	FY2022
<b>Domestic – Verbal Argument</b>	188	180
<b>Domestic – Drunkenness</b>	4	6
<b>Domestic – Abuse/Neglect</b>	7	16
<b>Domestic – Abuse/No 209A</b>	81	98
<b>Domestic - Abuse 209A Violation</b>	19	23
<b>Child Abuse/Neglect</b>	1	5
<b>Emergency 209A Application</b>	1	8



# TRAFFIC & SAFETY

The Traffic Division is comprised of 3 full-time employees. The Traffic Division is supervised by Sgt. Michael Henebury. 2 officers are assigned to traffic enforcement.

## Traffic Accidents

The Beverly Police Department investigated 809 motor vehicle accidents in FY2022, an increase of 245 from 564 in FY2021. Of those accidents, 45 involved personal injury, 0 involved a fatality, and 360 were just property damage related. The remaining 242 accidents involved minor if any damage and required no written report.

## Hit and Run

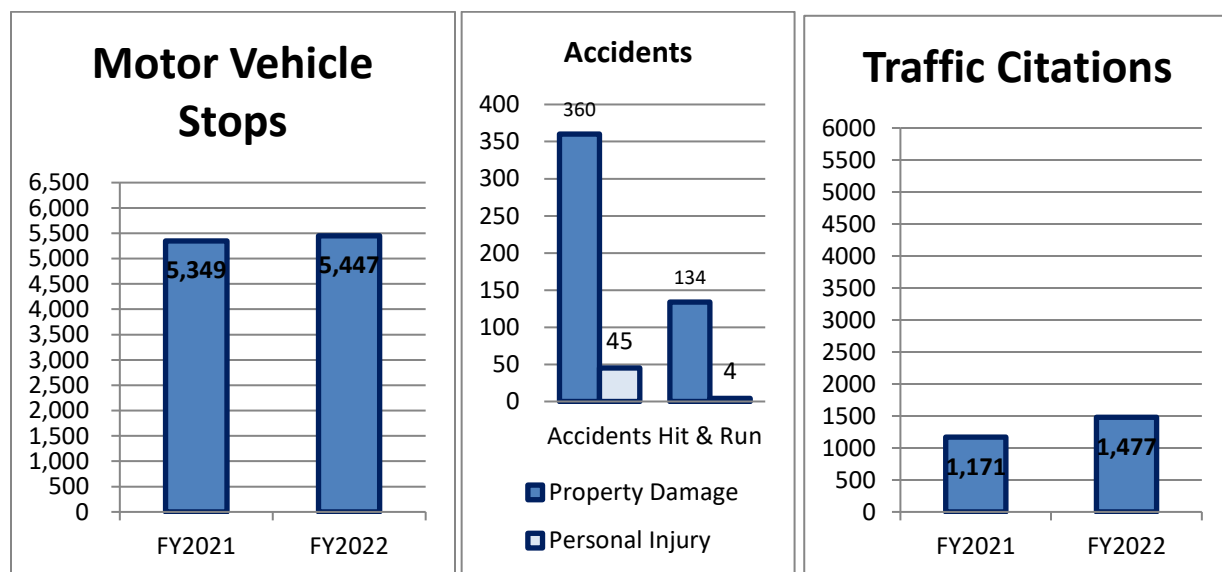
In FY2022, 138 hit and run traffic accidents were reported to the Police Department, a (70%) decrease from 81 in FY2021. Of those accidents, 4 resulted in personal injury, whereas 134 were related to property damage.

## OUI (Operating Under the Influence) Enforcement

The Police Department engaged in cooperative saturation alcohol enforcement patrols during the past year while participating in the Safe Streets Program. As a result of those enforcement efforts, a total of 18 OUI arrests were made in FY2022, an increase of 38% from 13 in FY2021.

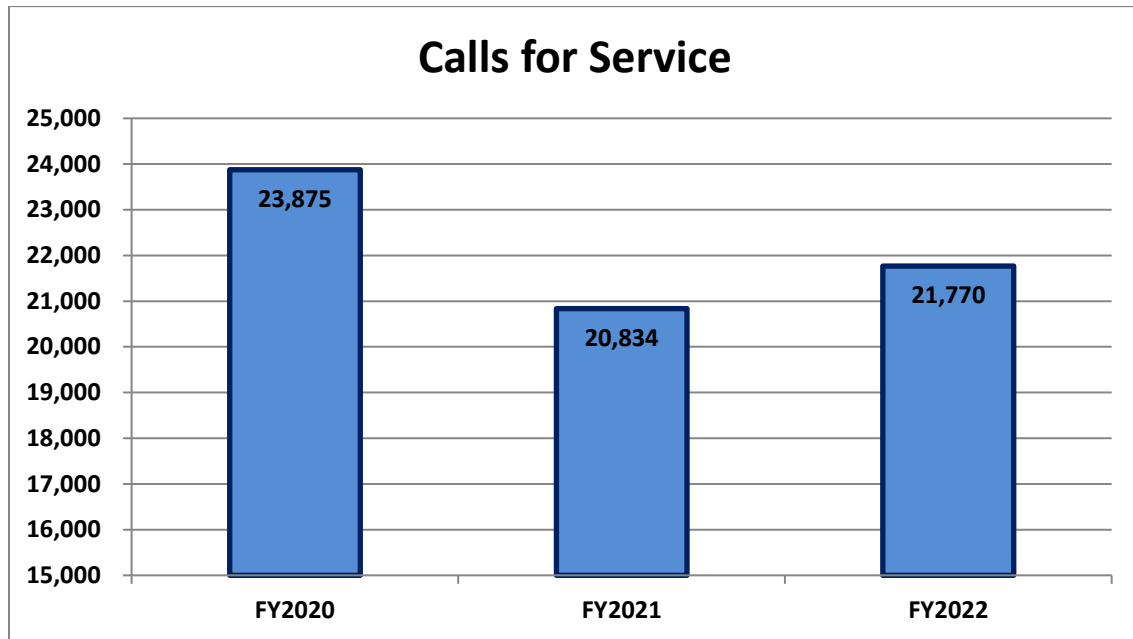
## Traffic Citations

The Beverly Police Department issued 1,477 traffic citations in FY2022, a (26%) increase from 1,171 in FY2021.





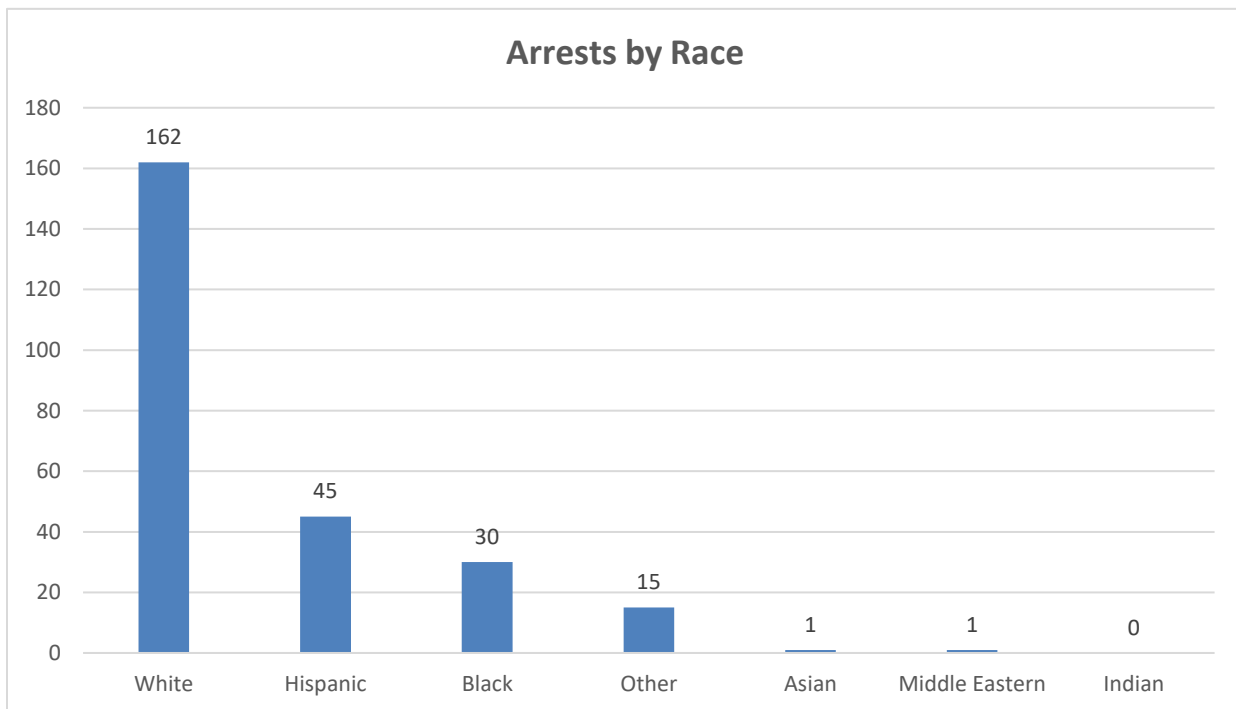
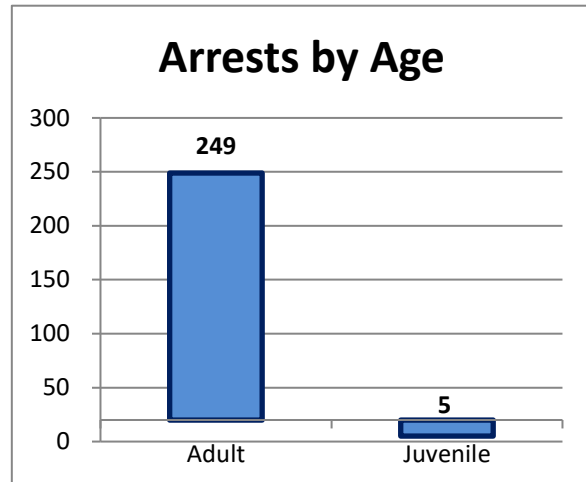
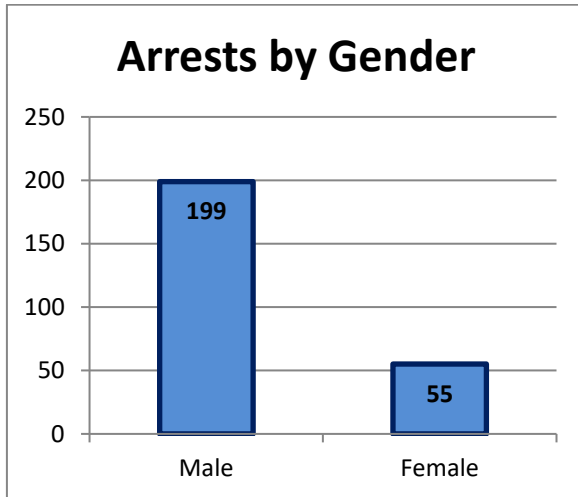
# FISCAL YEAR 2022 CRIME DATA



<b>TOP TEN SERVICE CALLS FY2022</b>		
<b>Description</b>	<b>Calls</b>	<b>Chg From FY21</b>
<b>Motor Vehicle Stop</b>	5,447	<b>+98</b>
<b>Medical Aids</b>	1,643	<b>+105</b>
<b>Disturbances</b>	1,098	<b>-124</b>
<b>Alarms</b>	913	<b>+93</b>
<b>Motor Vehicle Accident</b>	809	<b>+245</b>
<b>Suspicious Activity</b>	782	<b>-113</b>
<b>Check Well Being</b>	647	<b>+7</b>
<b>Domestic Incidents</b>	349	<b>+30</b>
<b>Assist Citizen</b>	331	<b>+25</b>
<b>Parking Complaint</b>	251	<b>-59</b>



## FISCAL YEAR 2022 ARREST DATA



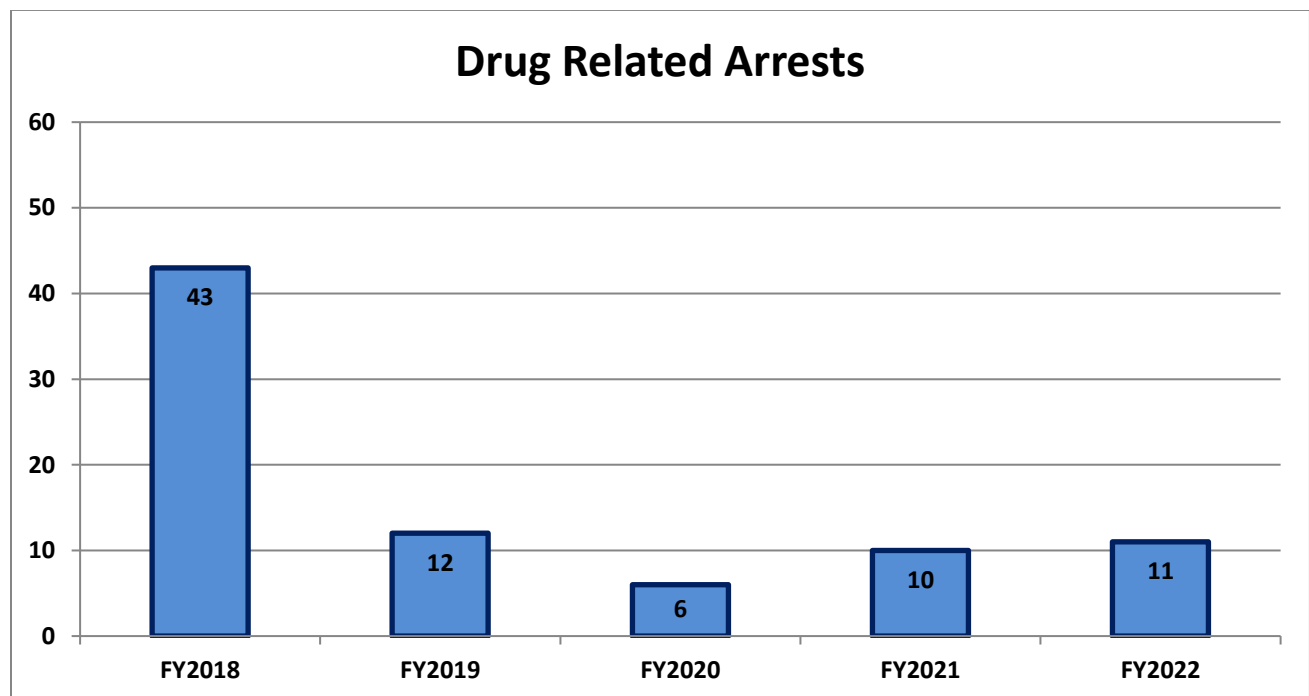




## DRUG ARRESTS

Drug related arrests increased in FY2022, from **10** in FY2021 to **11**.

There were **10** males arrested for drug related charges in FY2021, compared to **1** females and **11** adults, compared to **0** juveniles. A charge of either, possession of Class A (commonly heroin), and possession of Class B (commonly cocaine) was involved in most of the 11 arrests in FY2022. Overdoses increased slightly in FY22, with officers responding to **53** reported overdose calls **5** of which were fatal. These numbers were up 2 from 51 overdoses reported in FY21 and, fatal OD's increased with 3 being reported the previous fiscal year.





# VIOLENT CRIME DATA

In FY2022, calls for service involving violent crime in the City of Beverly increased **15%**, from **80** incidents in FY2021 to **92**. Compared to the last five years, violent crime in FY2022 was **36%** below average. Overall, the Beverly Police Department charged **169** people with violent crimes including **92** arrests (up **26%**) and **39** warrant applications (**-20%**) from FY2021.

## Assaults

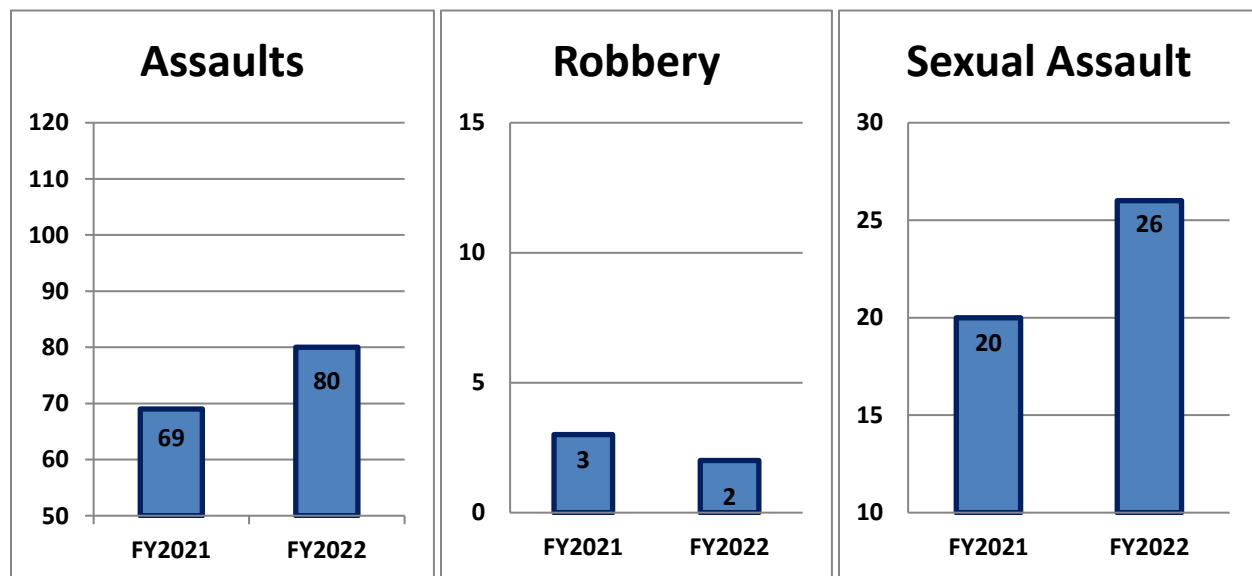
In FY2022, incidents involving assault increased by 11 from **69** in FY2021 to **80**, even with the average compared to the past five years. The Beverly Police Department made **20** arrests in FY22 (down **13%**) when compared to **23** in FY21, and applied for **5** warrants (down 80%) when compared, to **25** in FY21 in incidents involving assault.

## Robbery

A decrease in the number of robberies reported can be seen in FY2022. The number in overall robberies decreased in FY22 with **2** being reported, as compared to **3** In FY21. There were no reported armed robberies in FY22.

## Rape/Sexual Assault

Reports of sexual assault increased in FY2022. In FY2022 there were **26** reports of sexual assault in Beverly compared to **20** in FY2021. Reports of Rape saw a decrease in FY22 down from **8** in FY21 to **7**.





## PROPERTY CRIME DATA

In FY2022, the City of Beverly experienced a **15%** increase in overall property crimes, from **296** incidents in FY2021 to **341**.

### Burglary

The number of burglaries increased **5%** from **37** in FY2021 to **39** in FY2022.

### Larceny

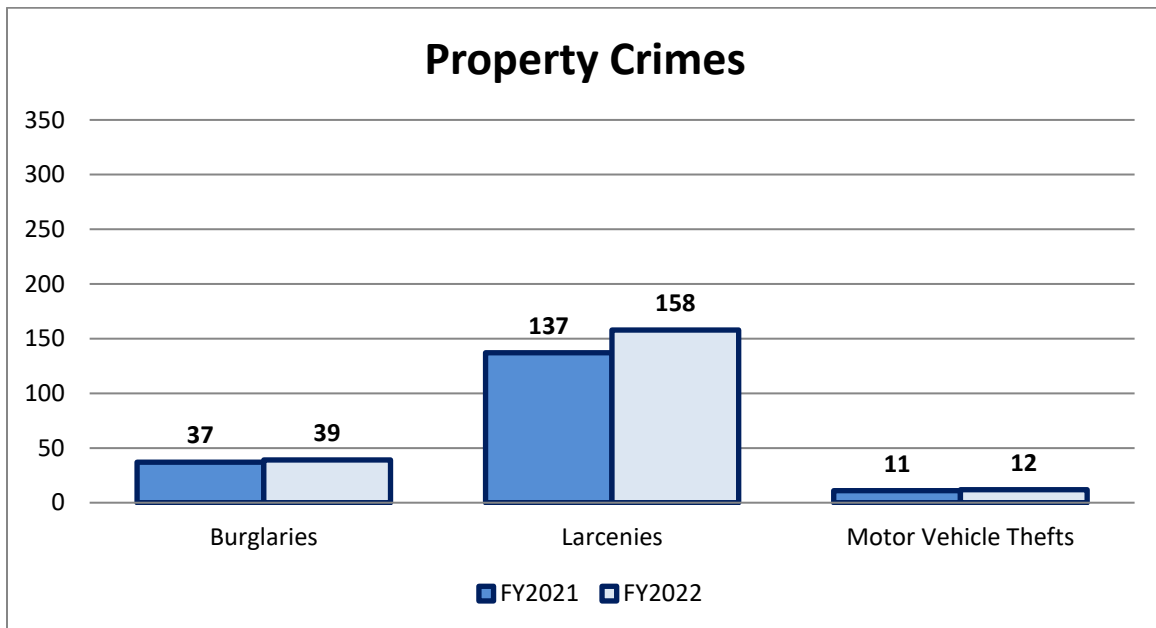
In comparison to burglaries, the number of larcenies reported increased **15%** from **137** in FY2021 to **158** in FY2022.

### Motor Vehicle Thefts

Motor vehicle thefts increased by 1 in FY22, from **11** in FY21 to **12** in FY2022.

### Arsons

There was **1** reported incidents of arson in FY22, this is a decrease from **2** incidents reported in FY2021. This is consistent with the average of the last five years.





# JUVENILE CRIME DATA

## Juvenile Arrests

Juvenile arrests in FY2022 increased from FY2021 going from **4** to **5** in FY2022. Of the **5** juvenile arrests in FY2020, **60%** occurred between the hours of 8am and 4pm while **40%** took place between 4pm and Midnight. In contrast, the hours of Midnight to 8am accounted for **0%** of all juvenile arrests.

## Juvenile Drug Arrests

Juvenile drug arrests stayed at zero in FY2022, mirroring reported juvenile drug arrests in FY2021.

## Juvenile Missing Reports

In FY2022, a decrease can be seen involving the number of juveniles reported missing. There were **8** reports of missing juveniles in FY2022 which is a **11%** decrease compared to **9** in FY2021.

